

1

2

3

4

5

6


7

Welcome to Bumble Bee Watch!


The yellow faced bumble bee (*Bombus vosnesenskii*) on arrowleaf balsomroot. Photo by Rich Hatfield.




How to Submit a Sighting

1


Take a photo of a bumble bee

2

Log in and upload your photo

3

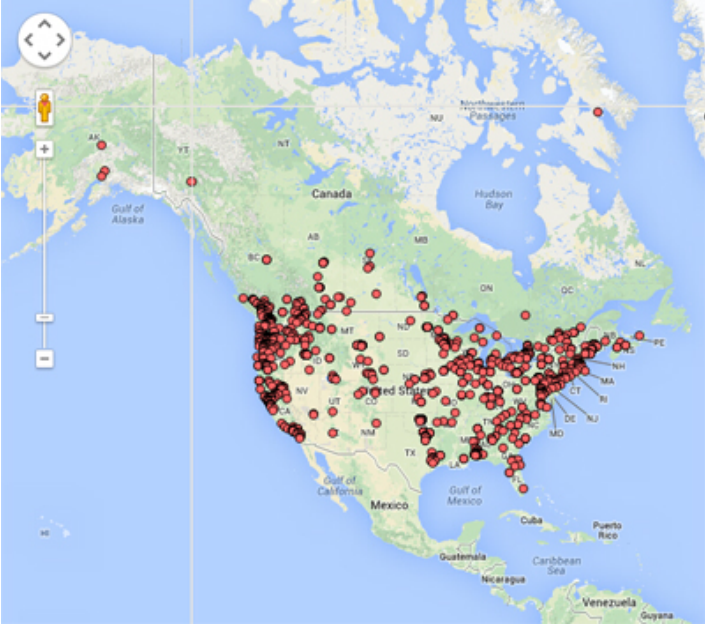
Identify your species

4

Sighting will be verified by expert

How to Use Bumble Bee Watch

Get started!

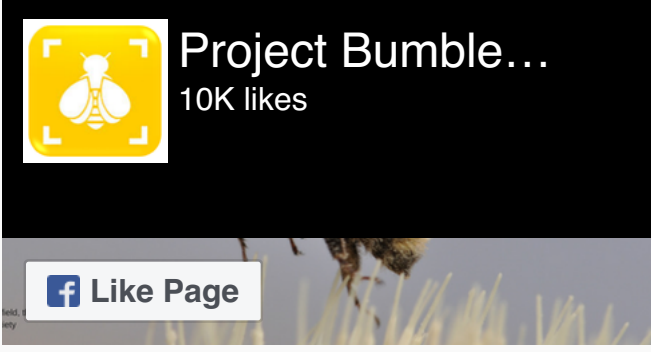


Map

Check out sightings submitted in your area! [Explore now...](#)


Stay in Touch

See what we're up to on Facebook:



Recent Sightings

Check out what other community scientists have submitted:



Bombus ternarius
Alberta, 8/29/15, by Mike Tate

Top Contributors

Province	Top Contributor	Checklists
Alabama	Nancy Evans	25
Alaska	Kevin Schafer	37
Arizona	Jim Wilce	8
Arkansas	priyangi malaviarachchi	13
California	Sheri Hagwood	58
Colorado	Janette C.	143
Connecticut	Anna Saunders	12
Delaware	beverly dant	84
District of Columbia	Embry Howell	5

E-newsletter

Want to know when to look for certain species of bumble bees, helpful tips, and other in the know information? Sign up for the Bumble Bee Watch e-newsletter!

Submit

Rusty-patched bumble bee

Bombus affinis

select a species

▼

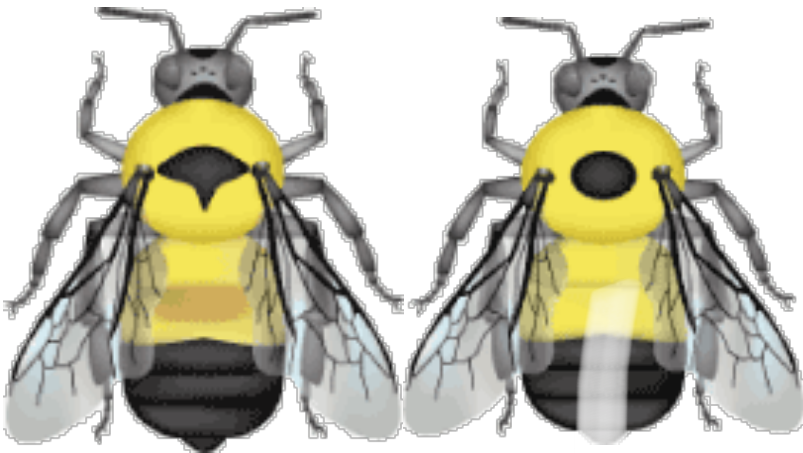


Photo by Christy Stewart

Bumble bee illustrations: Paul Williams (identification and color patterns) and Elaine Evans (bee body design).

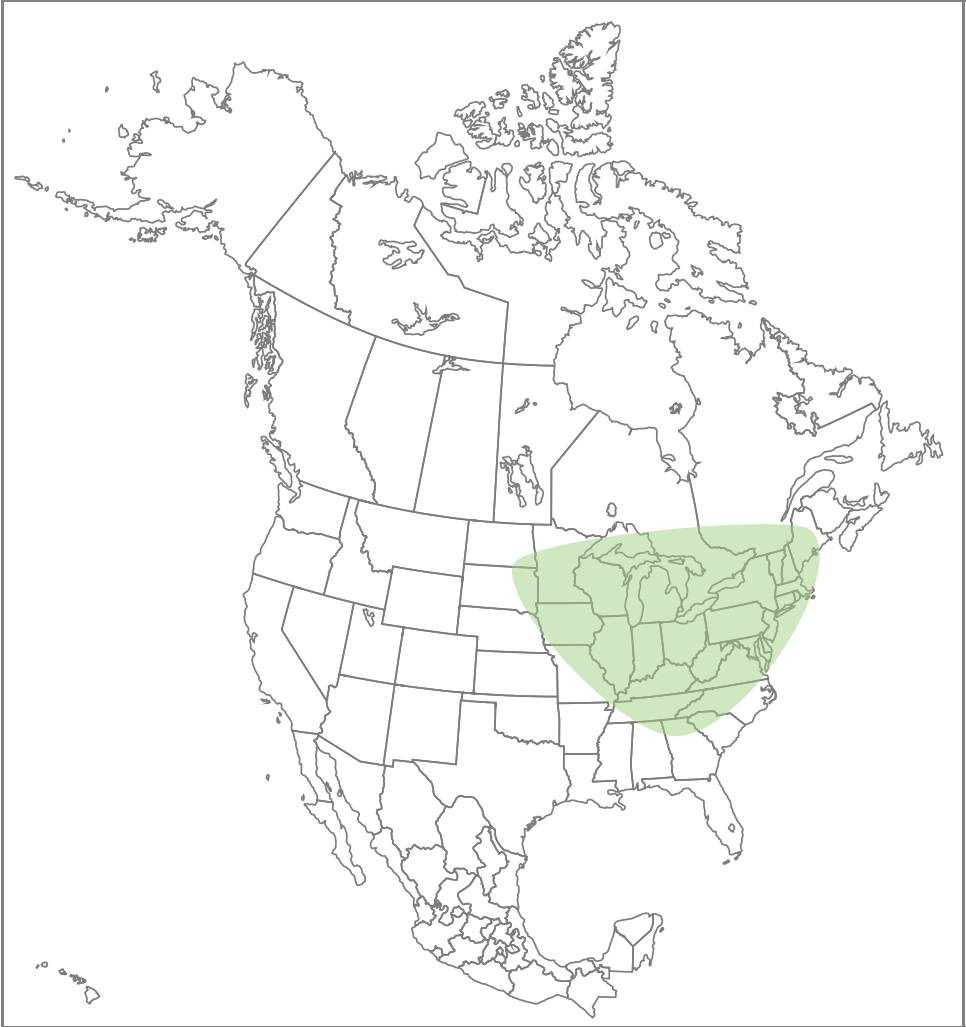
Identifying Features

Status: Rare, Endangered in Canada



- Queen: hair short and even. Hair on head entirely black; emerges early.
- Worker: rusty patch on T2, almost always completely surrounded by yellow hairs.

Range for this species



Base map: [Wikimedia Commons](#)

Floral Associations

- Common Milkweed
- New Jersey Tea
- Purple Prairie Clover
- Orange Jewelweed
- New England Aster

Look Alike Species

- B. griseocollis
- B. bimaculatus

When to Look



- HOME
- ABOUT
- RECORD A SIGHTING
- MAP
- BUMBLE BEE SPECIES
- GALLERY
- RESOURCES

About Bumble Bee Watch

Bumble Bee Watch is a community science project through the partnership of The Xerces Society, the University of Ottawa, Wildlife Preservation Canada, BeeSpotter, The Natural History Museum, London, and the Montreal Insectarium. Learn more about this project [here](#).

Thank You, Identifiers!

Bumble Bee Watch is supported by a team of volunteer bumble bee experts that verify the identification of every sighting submitted. We couldn't do it without their help!

Stay in touch



Black and gold bumble bee

Bombus auricomus

select a species

▼



Photo by Michelle Kalantari

Bumble bee illustrations: Paul Williams (identification and color patterns) and Elaine Evans (bee body design).

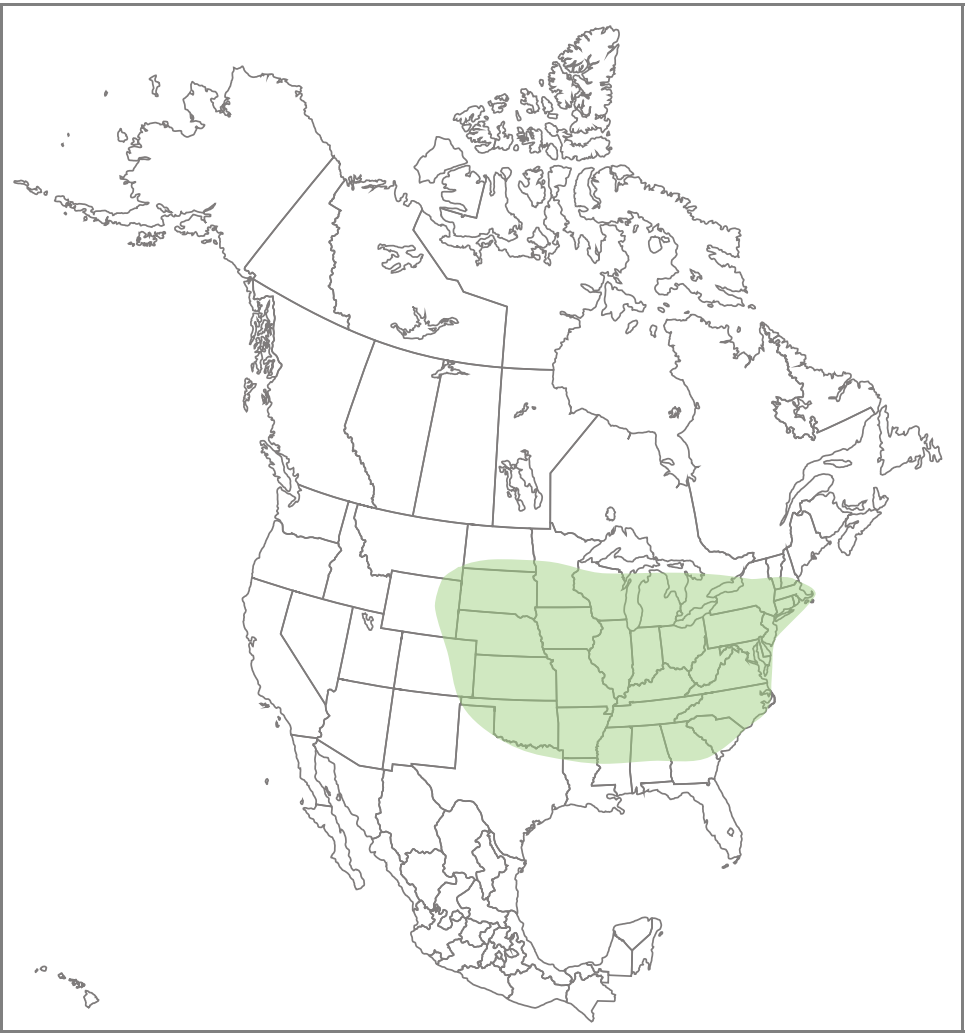
Identifying Features

Status: Common



- Black face, and black at rear of abdomen
- T2-3 yellow, sometimes with yellow on T1
- Large-sized bee with dark wings
- Long face.

Range for this species



Base map: [Wikimedia Commons](#)

Floral Associations

- Earleaf False Foxglove
- Prairie Milkweed
- Common Buttonbush
- Partridge Pea
- Virginia Bluebell

Look Alike Species

- B. pensylvanicus
- B. terricola

When to Look



About Bumble Bee Watch

Bumble Bee Watch is a community science project through the partnership of The Xerces Society, the University of Ottawa, Wildlife Preservation Canada, BeeSpotter, The Natural History Museum, London, and the Montreal Insectarium. Learn more about this project [here](#).

Thank You, Identifiers!

Bumble Bee Watch is supported by a team of volunteer bumble bee experts that verify the identification of every sighting submitted. We couldn't do it without their help!

Stay in touch



Two-spotted bumble bee

Bombus bimaculatus

select a species

▼



Photo by Christy Stewart

Bumble bee illustrations: Paul Williams (identification and color patterns) and Elaine Evans (bee body design).

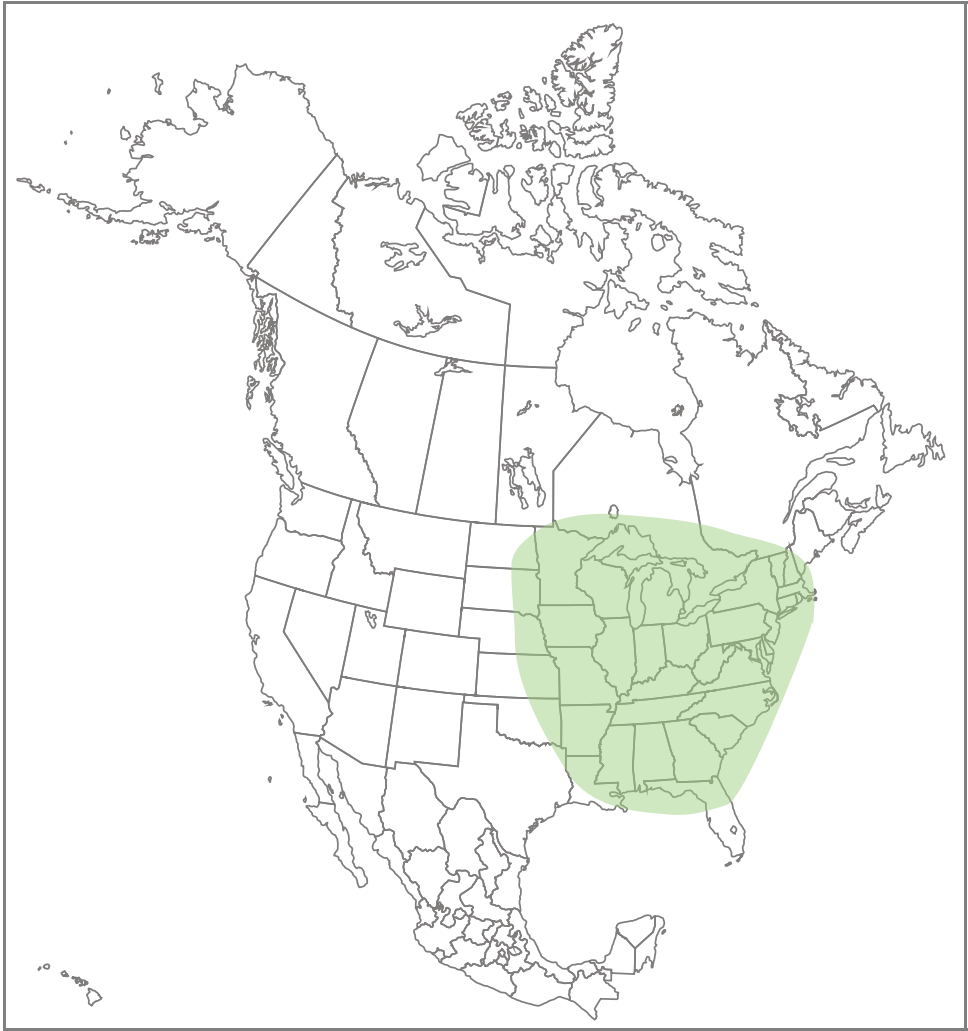
Identifying Features

Status:



- Usually with two spots, or a W shape on T2
- Long hair

Range for this species



Base map: [Wikimedia Commons](#)

Floral Associations

- Serviceberry
- Harebell
- New Jersey Tea
- Shrubby St. John's Wort
- Scarlet Beebalm

Look Alike Species

- B. impatiens
- B. griseocollis

When to Look



Ashton cuckoo bumble bee

Bombus bohemicus

select a species

▼



Photo by Sheila Colla

Bumble bee illustrations: Paul Williams (identification and color patterns) and Elaine Evans (bee body design).

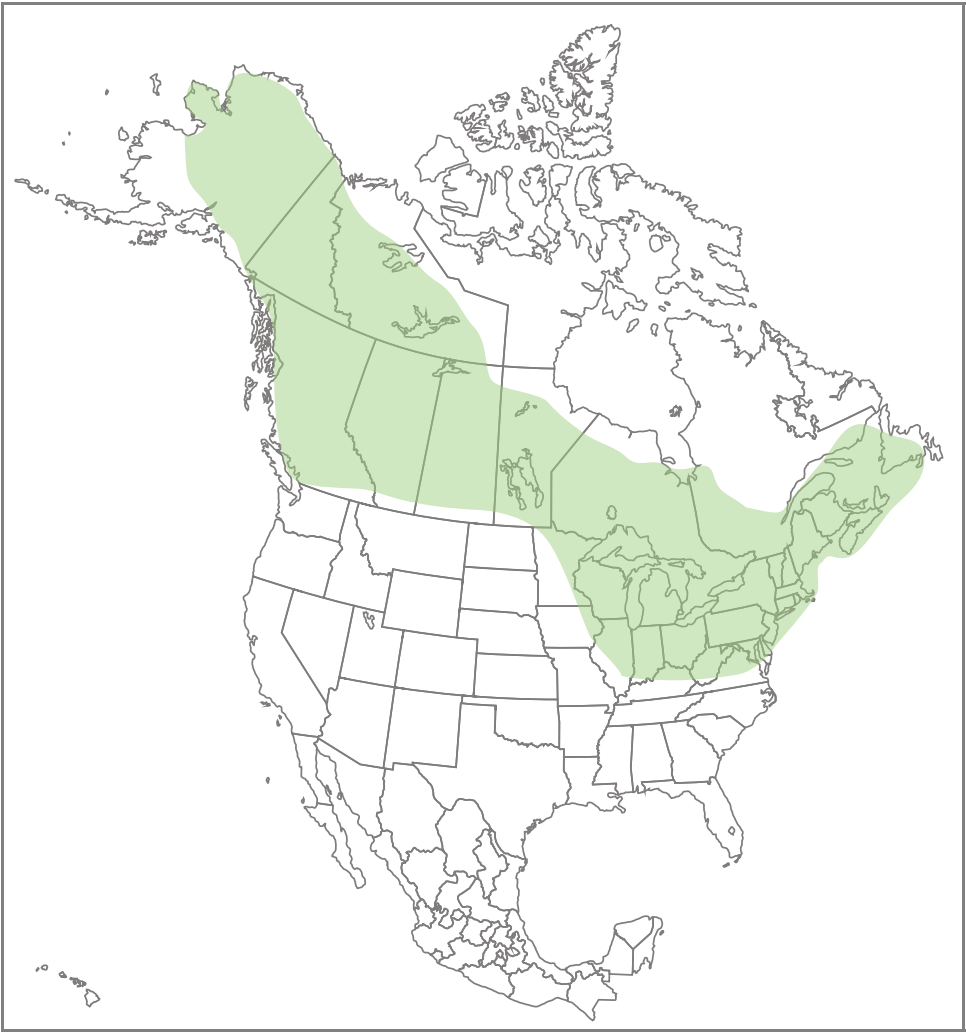
Identifying Features

Status: Very rare



- Hair on head almost entirely black
- Some white on the back end of the abdomen

Range for this species



Base map: [Wikimedia Commons](#)

Floral Associations

- Buttonbushes
- Beard-tongues
- Canada Goldenrod
- New England Aster
- Lowbush Blueberry

Look Alike Species

- B. insularis
- B. flavidus
- B. occidentalis
- B. cryptarum

When to Look



HOME
ABOUT
RECORD A
SIGHTING
MAP
BUMBLE BEE
SPECIES
GALLERY
RESOURCES

About Bumble Bee Watch

Bumble Bee Watch is a community science project through the partnership of The Xerces Society, the University of Ottawa, Wildlife Preservation Canada, BeeSpotter, The Natural History Museum, London, and the Montreal Insectarium. Learn more about this project here.

Thank You, Identifiers!

Bumble Bee Watch is supported by a team of volunteer bumble bee experts that verify the identification of every sighting submitted. We couldn't do it without their help!

Stay in touch



Northern amber bumble bee

Bombus borealis

select a species

▼



Photo by Leif Richardson

Bumble bee illustrations: Paul Williams (identification and color patterns) and Elaine Evans (bee body design).

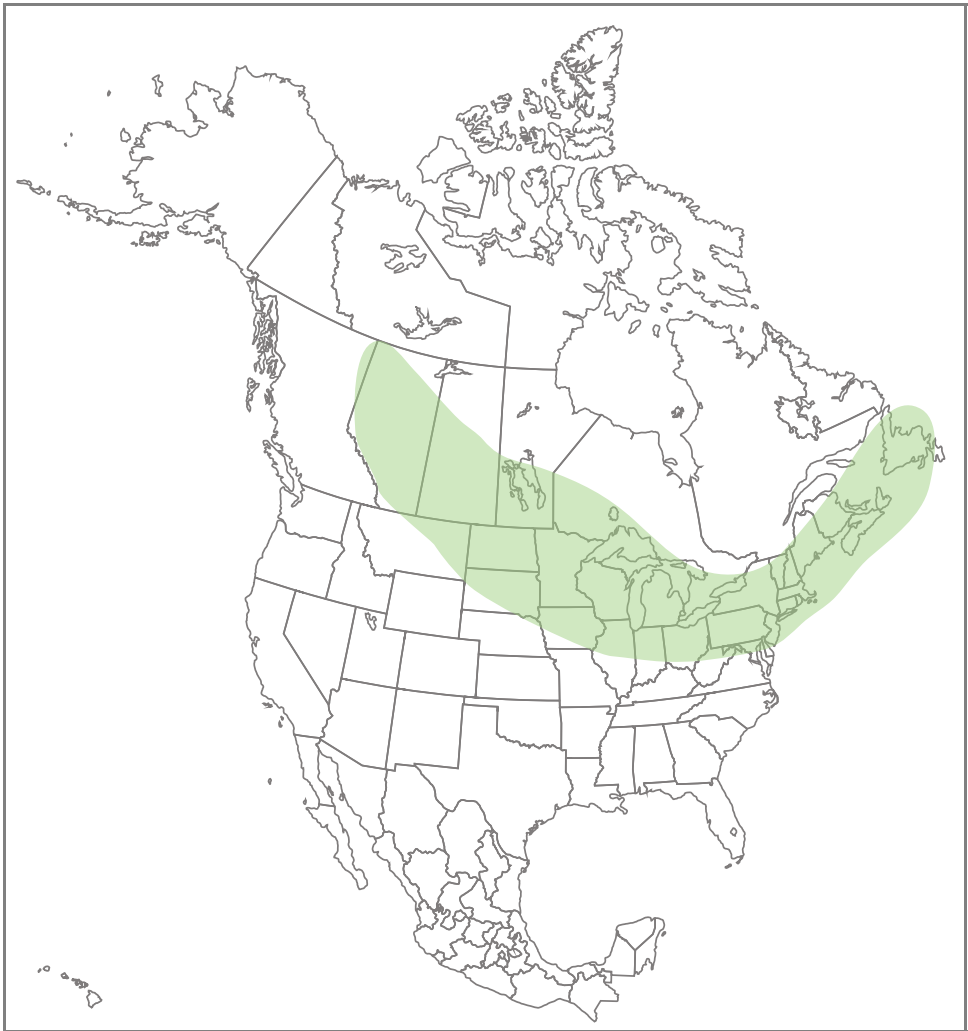
Identifying Features

Status:



- Face yellow
- Black band between the wings
- Abdomen almost completely yellow except on sides of body below wing bases

Range for this species



Base map: [Wikimedia Commons](#)

Floral Associations

- Canadian Milkvetch
- Virginia Waterleaf
- Bee Balm
- New England Aster
- Blue Vervain

Look Alike Species

- B. fervidus

When to Look



Lemon cuckoo bumble bee

Bombus citrinus

select a species

▼

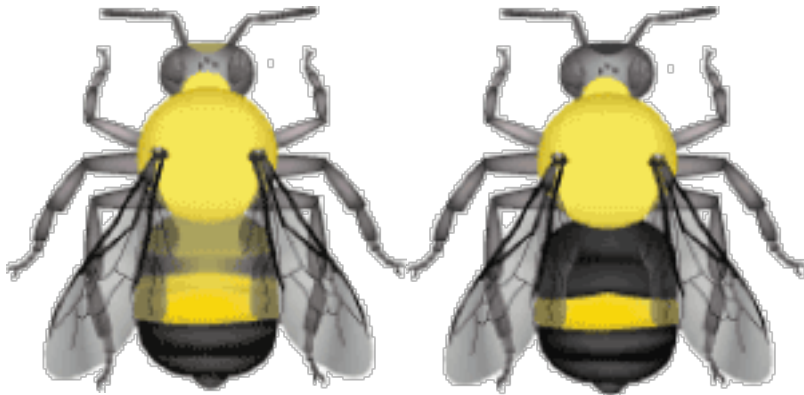


Photo by Christy Stewart

Bumble bee illustrations: Paul Williams (identification and color patterns) and Elaine Evans (bee body design).

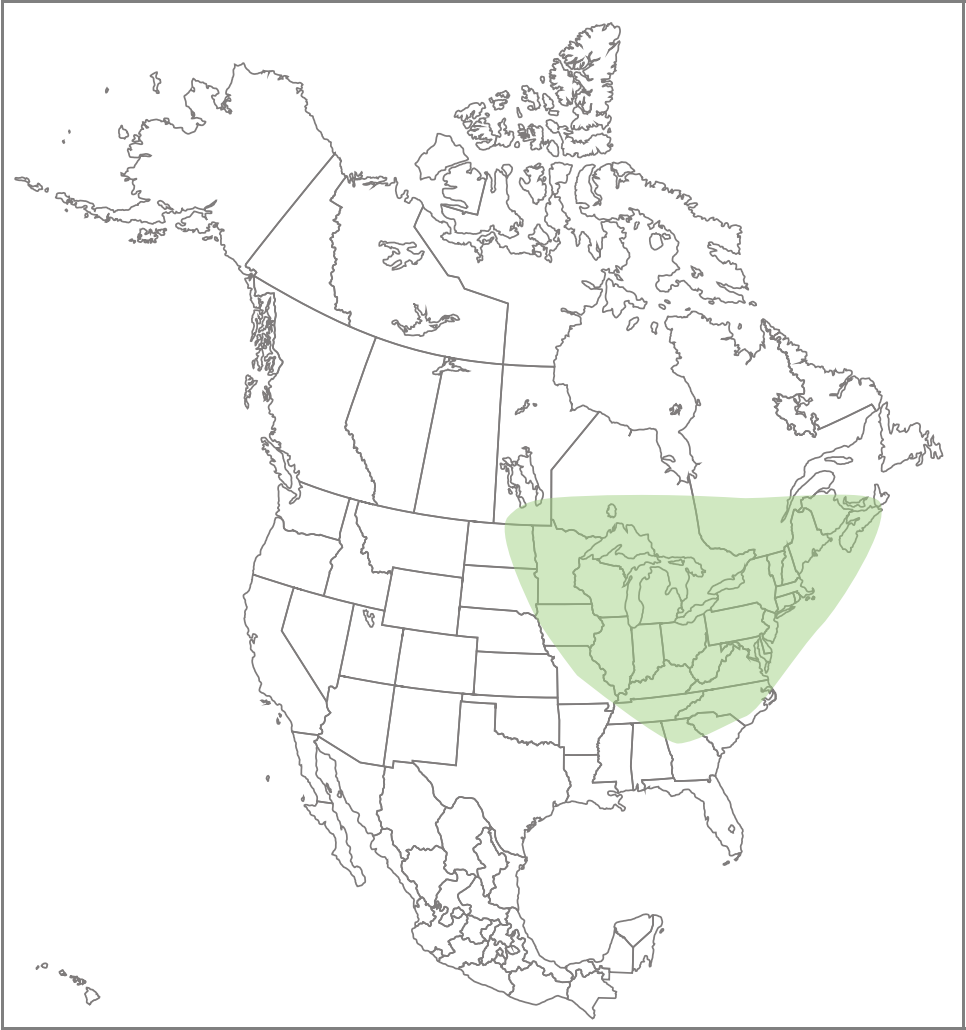
Identifying Features

Status:



- Cuckoo bumble bee, no pollen baskets on legs
- Thorax all yellow
- T1-2 either all black, or black intermixed with yellow; T4-5 black
- Abdomen shiny

Range for this species



Base map: [Wikimedia Commons](#)

Floral Associations

- Common Buttonbush
- Boneset
- Spotted Joe-pye-weed
- Heal-all
- Blue Vervain

Look Alike Species

- B. perplexus
- B. vagans

When to Look



About Bumble Bee Watch

Bumble Bee Watch is a community science project through the partnership of The Xerces Society, the University of Ottawa, Wildlife Preservation Canada, BeeSpotter, The Natural History Museum, London, and the Montreal Insectarium. Learn more about this project [here](#).

Thank You, Identifiers!

Bumble Bee Watch is supported by a team of volunteer bumble bee experts that verify the identification of every sighting submitted. We couldn't do it without their help!

Stay in touch



Yellow bumble bee

Bombus fervidus

select a species

▼

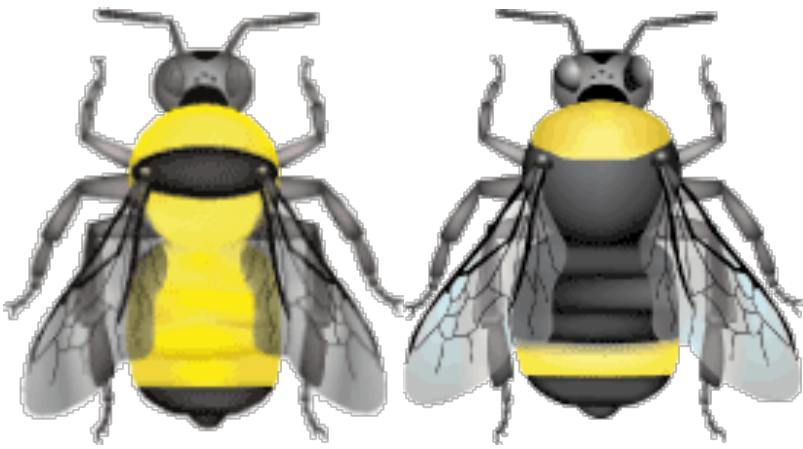


Photo by Leif Richardson

Bumble bee illustrations: Paul Williams (identification and color patterns) and Elaine Evans (bee body design).

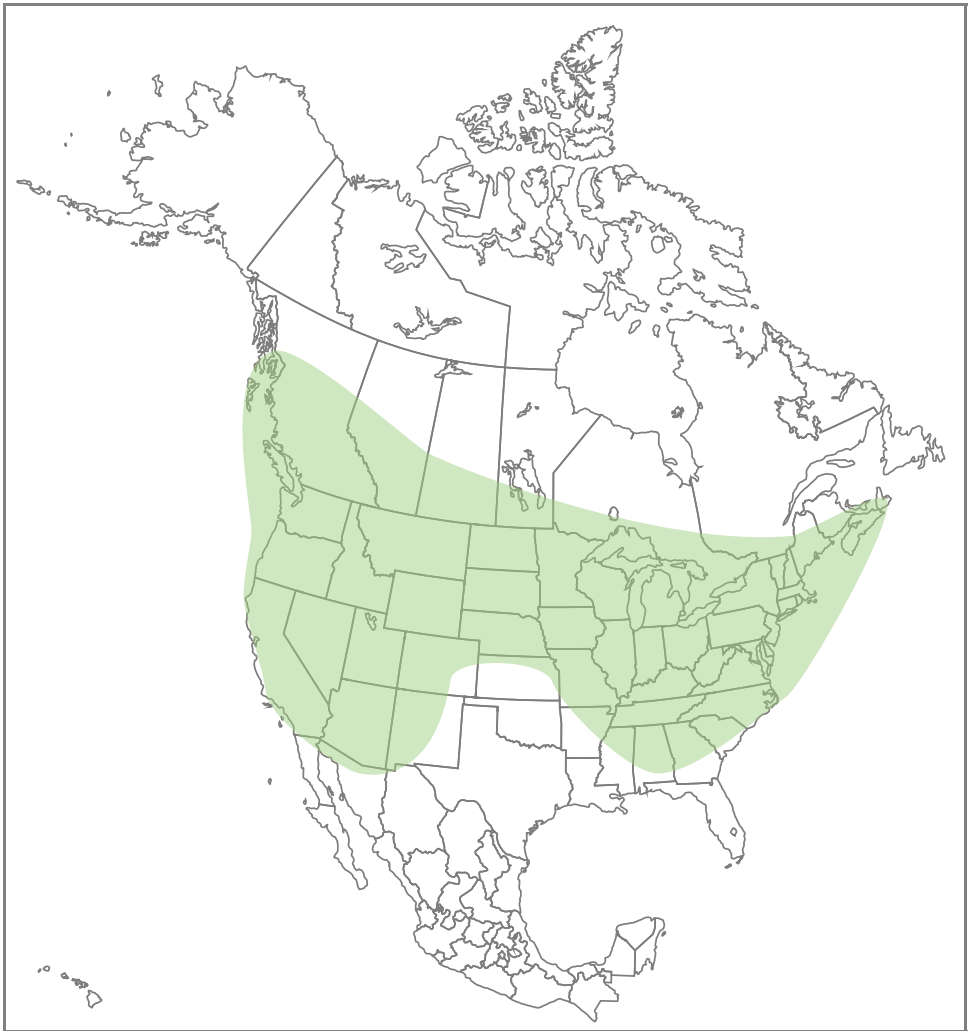
Identifying Features

Status: Can be locally common, but possibly in decline.



- Black face
- Yellow on T1-T4, T5 black
- Long face, dark wings.

Range for this species



Base map: [Wikimedia Commons](#)

Floral Associations

- Golden Paintbrush
- Locusts
- Virginia Waterleaf
- Mountain Laurel
- Cardinal Flowers

Look Alike Species

- B. appositus
- B. vosnesenskii
- B. caliginosus
- B. vandykei
- B. insularis

When to Look



Fernald cuckoo bumble bee

Bombus flavidus

select a species

▼

Photo by



Identifying Features

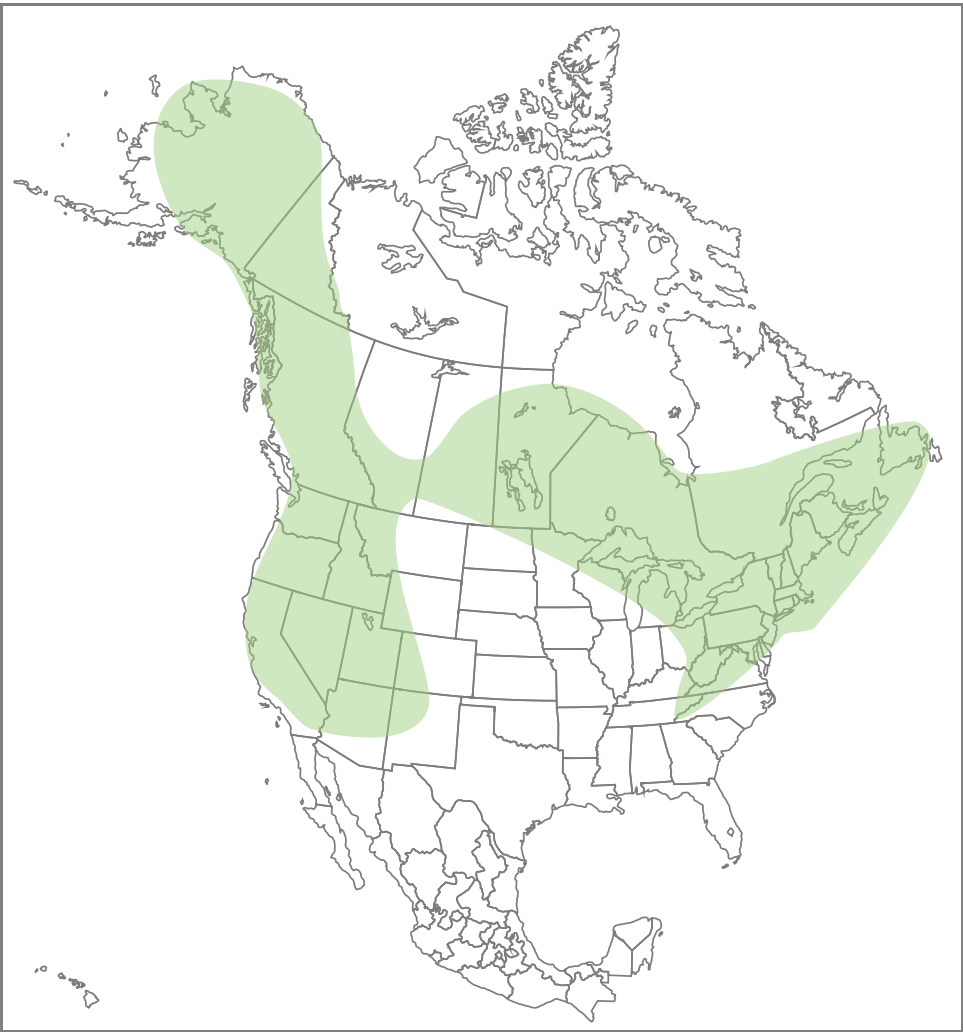
Status: Uncommon



- Cuckoo bumble bee, no pollen baskets on legs
- Black face
- T4 yellow/light, T2 black

Bumble bee illustrations: Paul Williams (identification and color patterns) and Elaine Evans (bee body design).

Range for this species



Base map: [Wikimedia Commons](#)

Floral Associations

- Milkweeds
- Yerba
- Hairy Goldenrod
- Lowbush Blueberry
- False Hellebores

Look Alike Species

- B. insularis
- B bohemicus

When to Look



About Bumble Bee Watch

Bumble Bee Watch is a community science project through the partnership of The Xerces Society, the University of Ottawa, Wildlife Preservation Canada, BeeSpotter, The Natural History Museum, London, and the Montreal Insectarium. Learn more about this project [here](#).

Thank You, Identifiers!

Bumble Bee Watch is supported by a team of volunteer bumble bee experts that verify the identification of every sighting submitted. We couldn't do it without their help!

Stay in touch



Brown-belted bumble bee

Bombus griseocollis

select a species

▼



Photo by Sheila Colla

Bumble bee illustrations: Paul Williams (identification and color patterns) and Elaine Evans (bee body design).

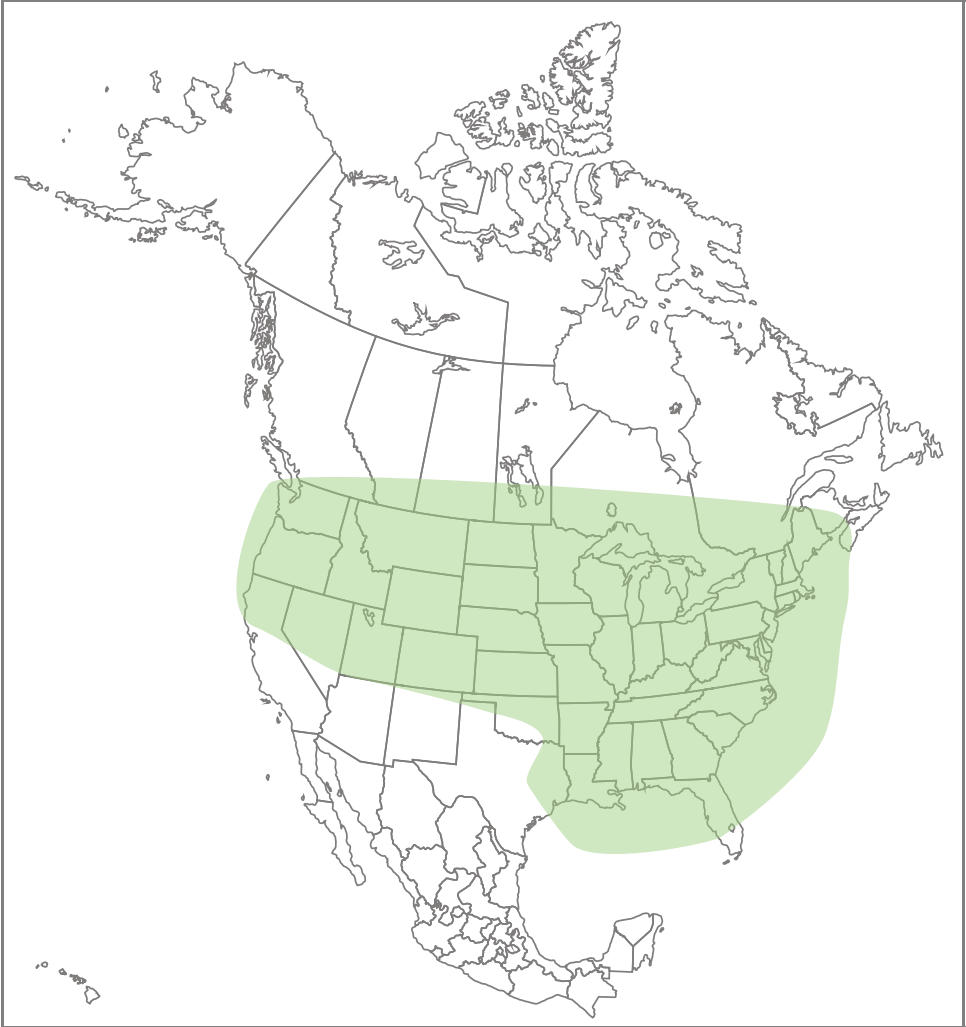
Identifying Features

Status: Common



- Thorax and T1 mostly yellow
- Face and T3-5 black
- T2 often with some brown.

Range for this species



Base map: [Wikimedia Commons](#)

Floral Associations

- Common Milkweed
- Wild Basil
- Shrubby St. John's Wort
- Pickerelweed
- Canada Goldenrod

Look Alike Species

- B. bimaculatus
- B. affinis
- B. morrisoni
- B. impatiens

When to Look



- HOME
- ABOUT
- RECORD A SIGHTING
- MAP
- BUMBLE BEE SPECIES
- GALLERY
- RESOURCES

About Bumble Bee Watch

Bumble Bee Watch is a community science project through the partnership of The Xerces Society, the University of Ottawa, Wildlife Preservation Canada, BeeSpotter, The Natural History Museum, London, and the Montreal Insectarium. Learn more about this project [here](#).

Thank You, Identifiers!

Bumble Bee Watch is supported by a team of volunteer bumble bee experts that verify the identification of every sighting submitted. We couldn't do it without their help!

Stay in touch



Common eastern bumble bee

Bombus impatiens

select a species

▼

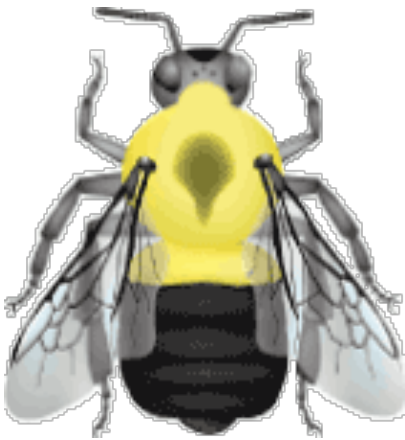


Photo by Sheila Colla

Bumble bee illustrations: Paul Williams (identification and color patterns) and Elaine Evans (bee body design).

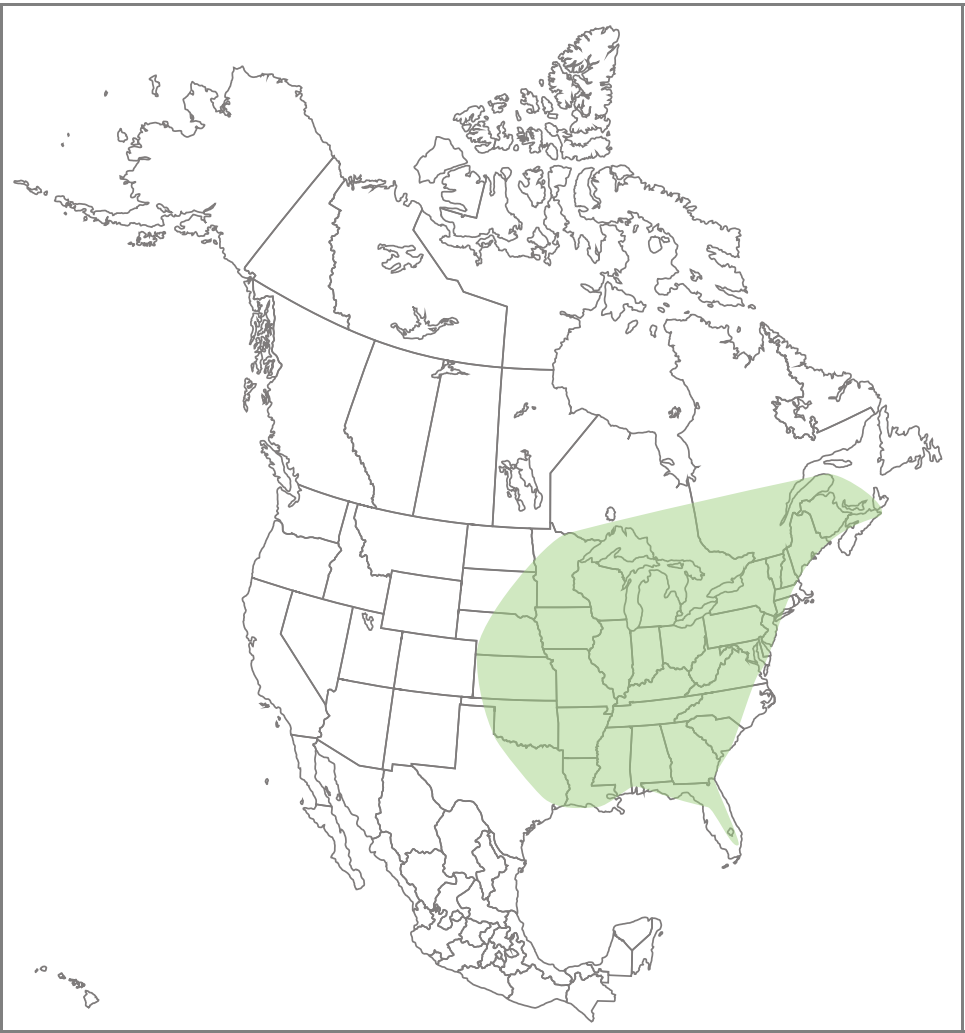
Identifying Features

Status:



- Thorax mostly yellow
- T1 yellow
- T2-5 black

Range for this species



Base map: [Wikimedia Commons](#)

Floral Associations

- Pacific Serviceberry
- Common Buttonbush
- White Turtlehead
- Spotted Joe-pye-weed
- Blazing Stars

Look Alike Species

- B. bimaculatus
- B. griseocollis

When to Look



About Bumble Bee Watch

Bumble Bee Watch is a community science project through the partnership of The Xerces Society, the University of Ottawa, Wildlife Preservation Canada, BeeSpotter, The Natural History Museum, London, and the Montreal Insectarium. Learn more about this project [here](#).

Thank You, Identifiers!

Bumble Bee Watch is supported by a team of volunteer bumble bee experts that verify the identification of every sighting submitted. We couldn't do it without their help!

Stay in touch



Indiscriminate cuckoo bumble bee

Bombus insularis

select a species

▼

Photo by



Identifying Features

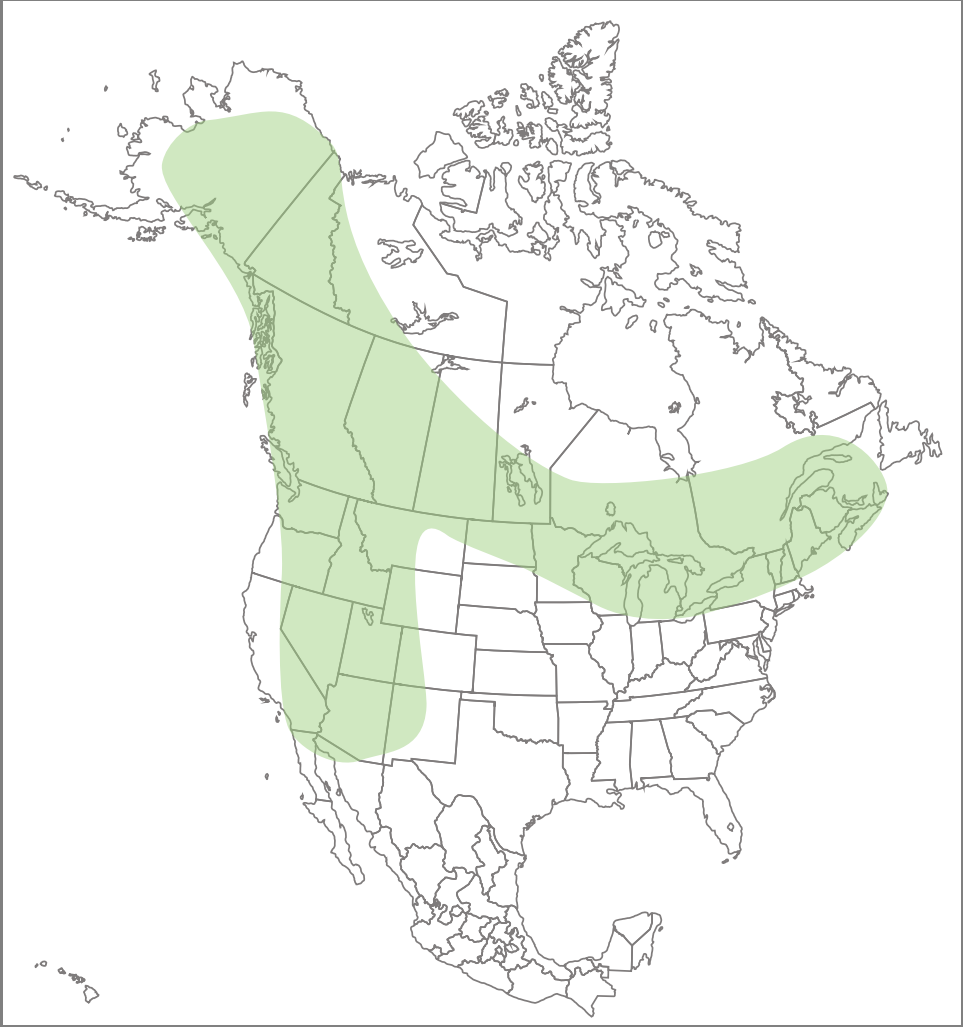
Status: Common



- Cuckoo bumble bee, no pollen baskets on legs
- Yellow face
- T1-3 black

Bumble bee illustrations: Paul Williams (identification and color patterns) and Elaine Evans (bee body design).

Range for this species



Base map: [Wikimedia Commons](#)

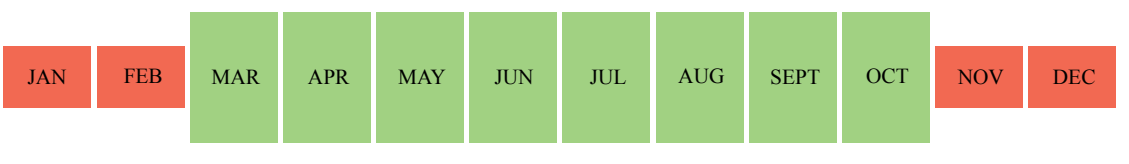
Floral Associations

- Milkweeds
- Philadelphia Fleabane
- Sneezeweed
- Hooded Lady's-tresses
- Lowbush Blueberry

Look Alike Species

- B. vosnesenskii
- B. caliginosus
- B. vandykei
- B. flavidus

When to Look



About Bumble Bee Watch

Bumble Bee Watch is a community science project through the partnership of The Xerces Society, the University of Ottawa, Wildlife Preservation Canada, BeeSpotter, The Natural History Museum, London, and the Montreal Insectarium. Learn more about this project [here](#).

Thank You, Identifiers!

Bumble Bee Watch is supported by a team of volunteer bumble bee experts that verify the identification of every sighting submitted. We couldn't do it without their help!

Stay in touch



American bumble bee

Bombus pensylvanicus

select a species

▼



Photo by Deborah Rudus

Bumble bee illustrations: Paul Williams (identification and color patterns) and Elaine Evans (bee body design).

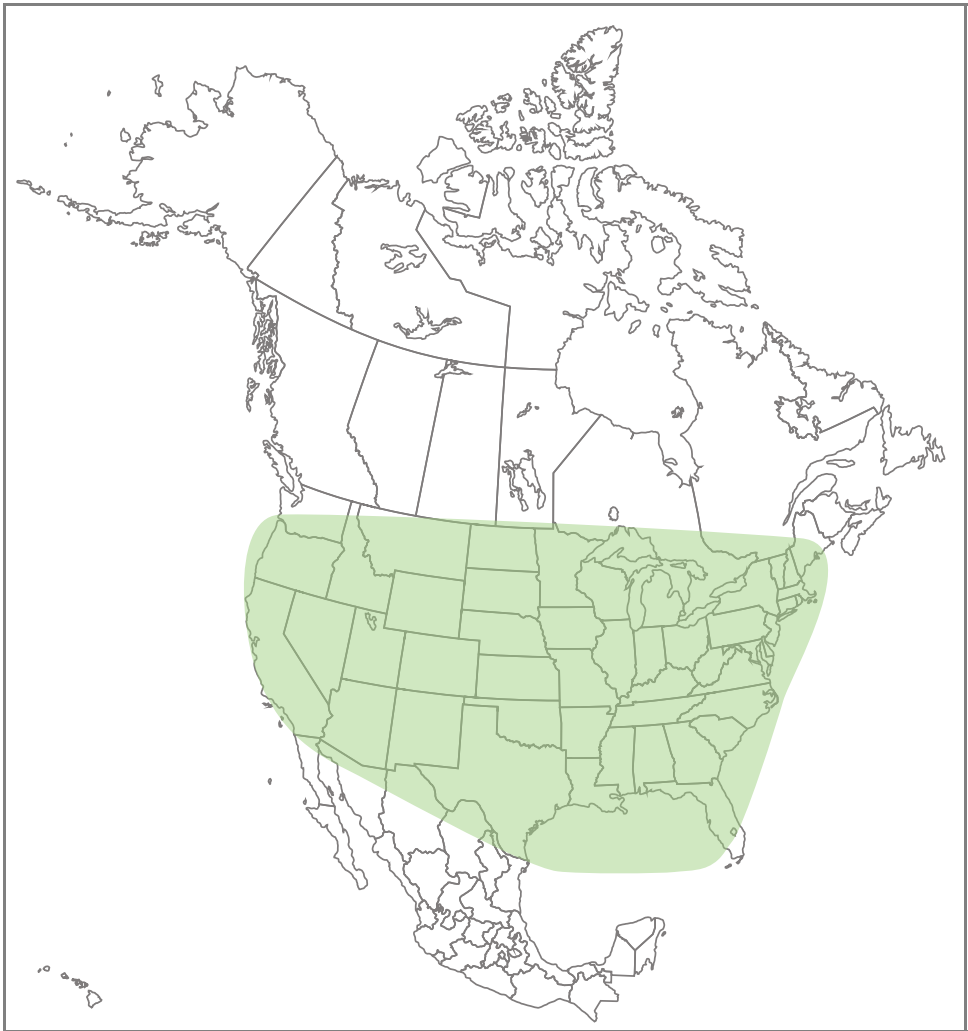
Identifying Features

Status: In decline



- Face black
- T1 with yellow often in middle
- T2-3 yellow
- T4-5 black
- Dark wings

Range for this species



Base map: [Wikimedia Commons](#)

Floral Associations

- Canadian Milkvetch
- Philadelphia Fleabane
- Virginia Waterleaf
- Pickerelweed
- Red Raspberry

Look Alike Species

- B. nevadensis
- B. morrisoni
- B. crotchii
- B. auricomus
- B. terricola

When to Look



- HOME
- ABOUT
- RECORD A SIGHTING
- MAP
- BUMBLE BEE SPECIES
- GALLERY
- RESOURCES

About Bumble Bee Watch

Bumble Bee Watch is a community science project through the partnership of The Xerces Society, the University of Ottawa, Wildlife Preservation Canada, BeeSpotter, The Natural History Museum, London, and the Montreal Insectarium. Learn more about this project [here](#).

Thank You, Identifiers!

Bumble Bee Watch is supported by a team of volunteer bumble bee experts that verify the identification of every sighting submitted. We couldn't do it without their help!

Stay in touch



Confusing bumble bee

Bombus perplexus

select a species

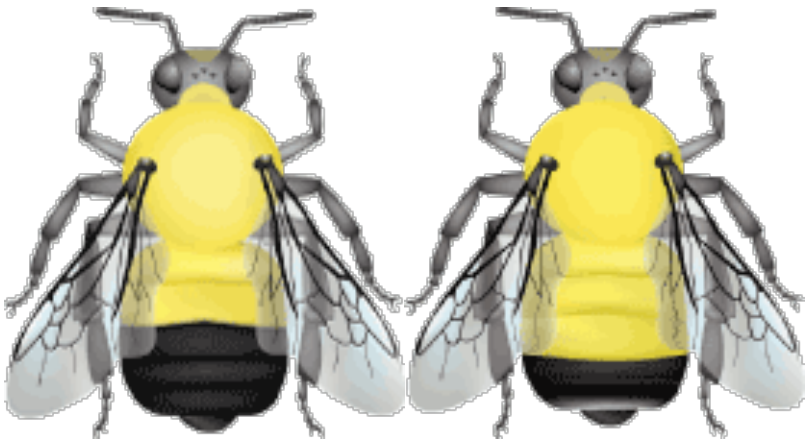
▼

Photo by



Identifying Features

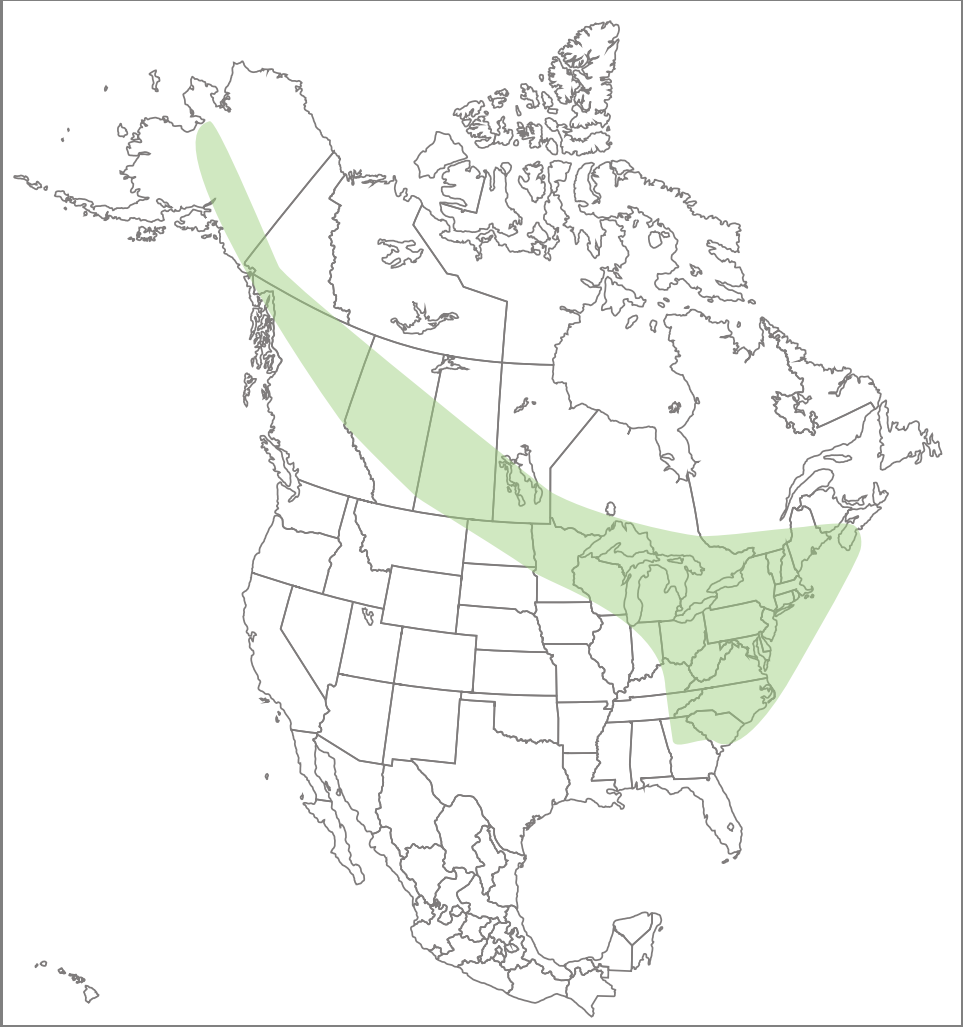
Status:



- Highly variable species
- Thorax usually all yellow between wings, below wings (sides of body) often black
- T1-2 yellow
- Tail usually black, or some pale/white hairs

Bumble bee illustrations: Paul Williams (identification and color patterns) and Elaine Evans (bee body design).

Range for this species



Base map: [Wikimedia Commons](#)

Floral Associations

- Common Milkweed
- Harebell
- Spotted Joe-pye-weed
- Virginia Waterleaf
- Flowering Raspberry

Look Alike Species

- B. vagans

When to Look



About Bumble Bee Watch

Bumble Bee Watch is a community science project through the partnership of The Xerces Society, the University of Ottawa, Wildlife Preservation Canada, BeeSpotter, The Natural History Museum, London, and the Montreal Insectarium. Learn more about this project [here](#).

Thank You, Identifiers!

Bumble Bee Watch is supported by a team of volunteer bumble bee experts that verify the identification of every sighting submitted. We couldn't do it without their help!

Stay in touch



Sanderson bumble bee

Bombus sandersoni

select a species

▼

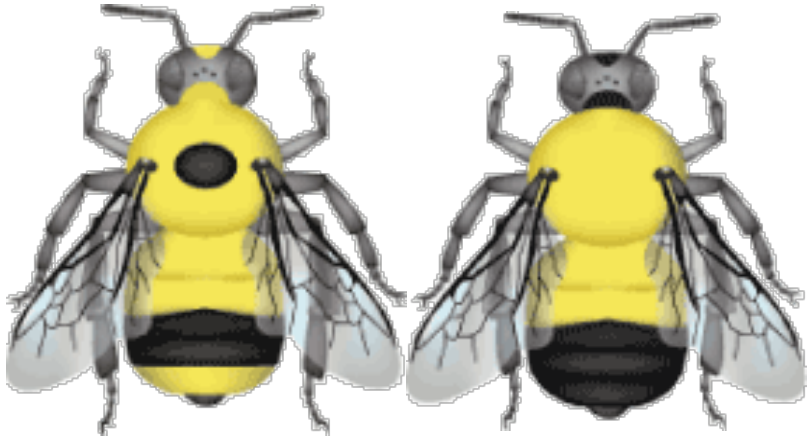


Photo by Sheila Colla

Bumble bee illustrations: Paul Williams (identification and color patterns) and Elaine Evans (bee body design).

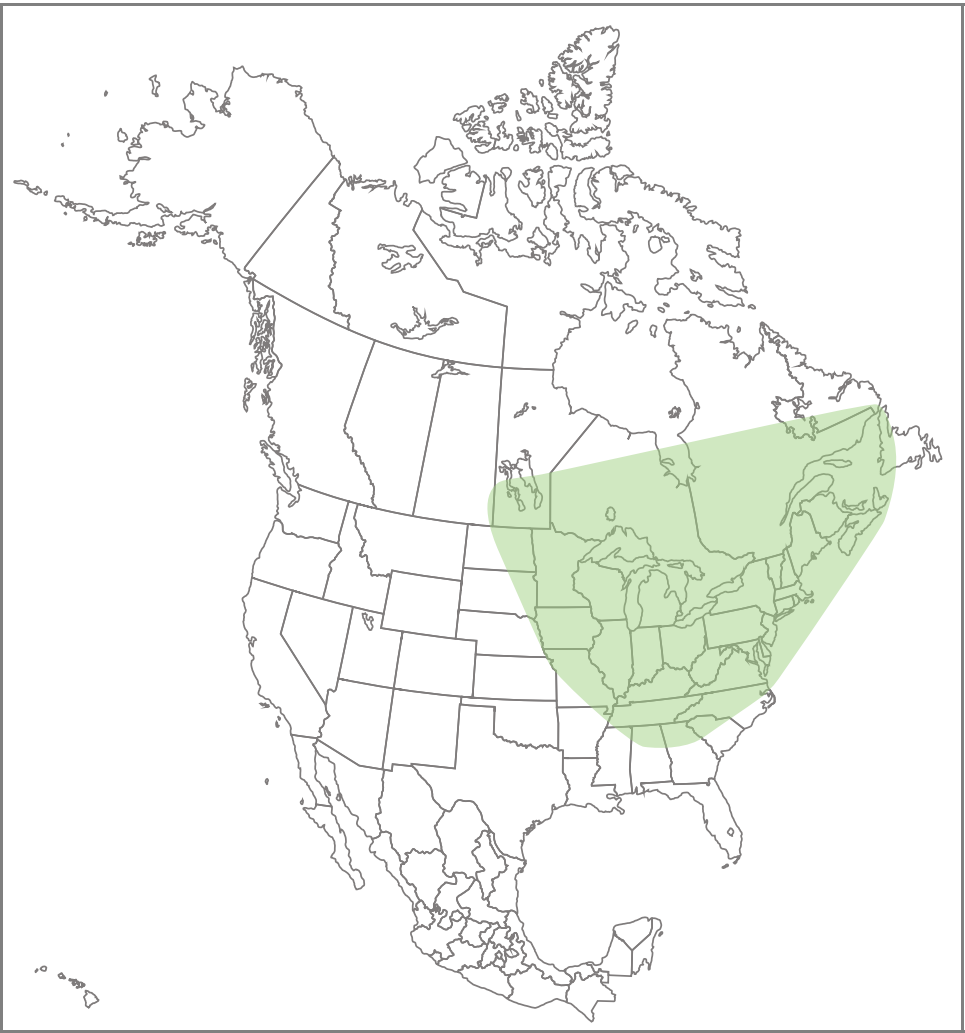
Identifying Features

Status: Uncommon



- Thorax variable, but always with some black between the wing bases
- T1-2 yellow
- T3-5 black, sometimes with white/yellow hairs on T5
- Hair short, smaller bumble bee

Range for this species



Base map: [Wikimedia Commons](#)

Floral Associations

- Huckleberry
- Sheep Laurel
- Azaleas
- Purple Pitcher Plant
- Blue Skullcap

Look Alike Species

- B. perplexus
- B. vagans

When to Look



About Bumble Bee Watch

Bumble Bee Watch is a community science project through the partnership of The Xerces Society, the University of Ottawa, Wildlife Preservation Canada, BeeSpotter, The Natural History Museum, London, and the Montreal Insectarium. Learn more about this project [here](#).

Thank You, Identifiers!

Bumble Bee Watch is supported by a team of volunteer bumble bee experts that verify the identification of every sighting submitted. We couldn't do it without their help!

Stay in touch



Suckley cuckoo bumble bee

Bombus suckleyi

select a species

▼

Photo by



Identifying Features

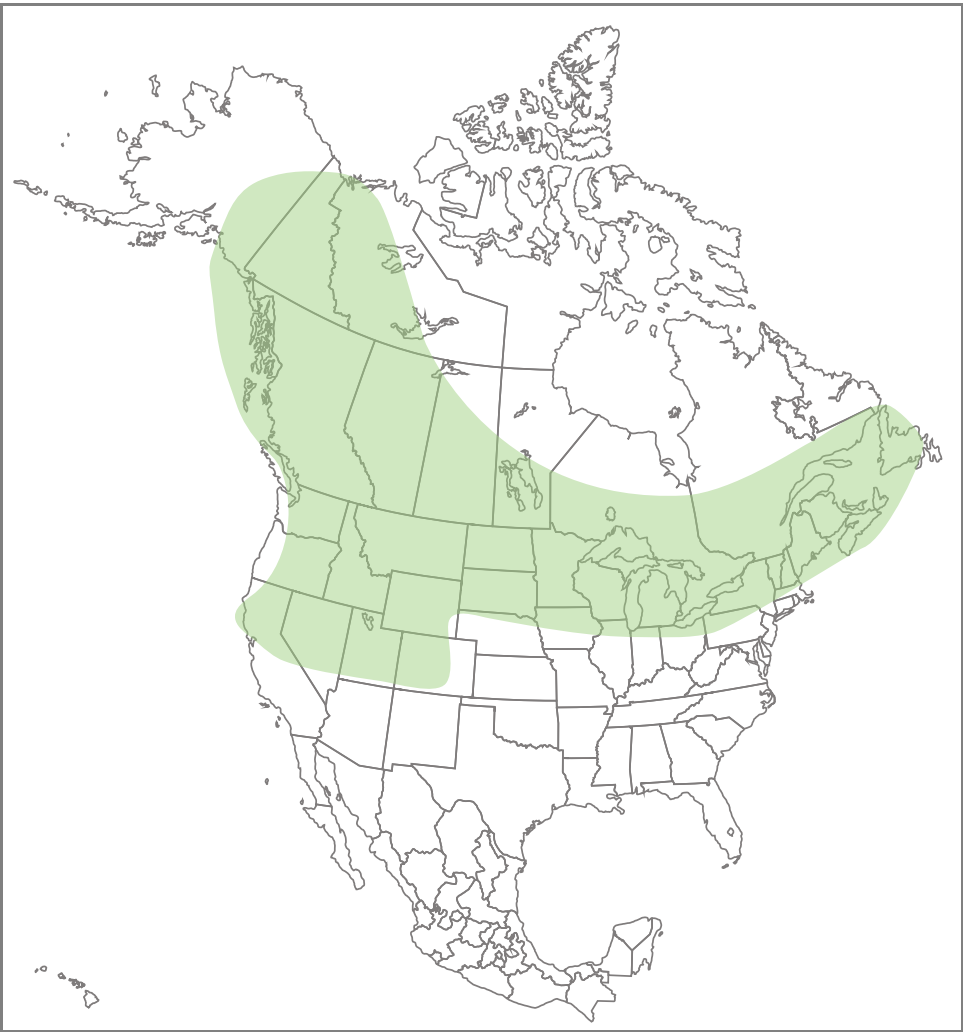
Status:



- Face black
- Thorax yellow with black spot or band between the wings
- T1-2 black
- T3-5 with some yellow
- Hair long

Bumble bee illustrations: Paul Williams (identification and color patterns) and Elaine Evans (bee body design).

Range for this species



Base map: [Wikimedia Commons](#)

Floral Associations

- Milkvetch
- Rabbitbrushes
- Curly-top Gumwood
- Tall Fringed Bluebells
- Common Snowberry

Look Alike Species

- B. flavidus
- B. insularis

When to Look



- HOME
- ABOUT
- RECORD A SIGHTING
- MAP
- BUMBLE BEE SPECIES
- GALLERY
- RESOURCES

About Bumble Bee Watch

Bumble Bee Watch is a community science project through the partnership of The Xerces Society, the University of Ottawa, Wildlife Preservation Canada, BeeSpotter, The Natural History Museum, London, and the Montreal Insectarium. Learn more about this project [here](#).

Thank You, Identifiers!

Bumble Bee Watch is supported by a team of volunteer bumble bee experts that verify the identification of every sighting submitted. We couldn't do it without their help!

Stay in touch



Tri-colored bumble bee

Bombus ternarius

select a species

▼



Photo by Sheila Colla

Bumble bee illustrations: Paul Williams (identification and color patterns) and Elaine Evans (bee body design).

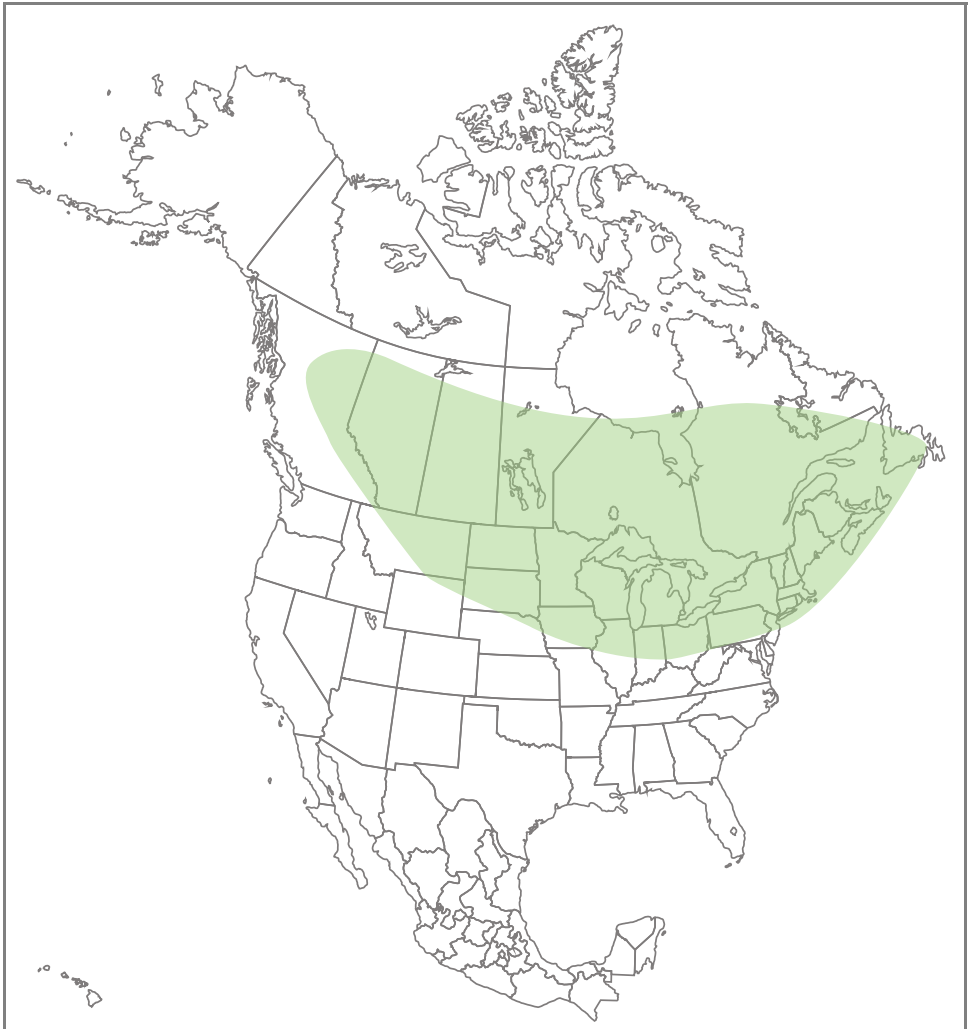
Identifying Features

Status: Common



- Face yellow
- Thorax yellow with black band between the wing bases and a triangular wedge pointed towards the tail
- T1 Yellow
- T2-3 Orange
- T4 yellow
- T5 black

Range for this species



Base map: [Wikimedia Commons](#)

Floral Associations

- Wild Sarsaparilla
- Spring Beauty
- Spotted Joe-pye-weed
- Pin Cherry
- Lowbush Blueberry

Look Alike Species

- B. rufocinctus
- B. huntii
- B. bifarius

When to Look



Yellow-banded bumble bee

Bombus terricola

select a species

▼



Photo by Leif Richardson

Bumble bee illustrations: Paul Williams (identification and color patterns) and Elaine Evans (bee body design).

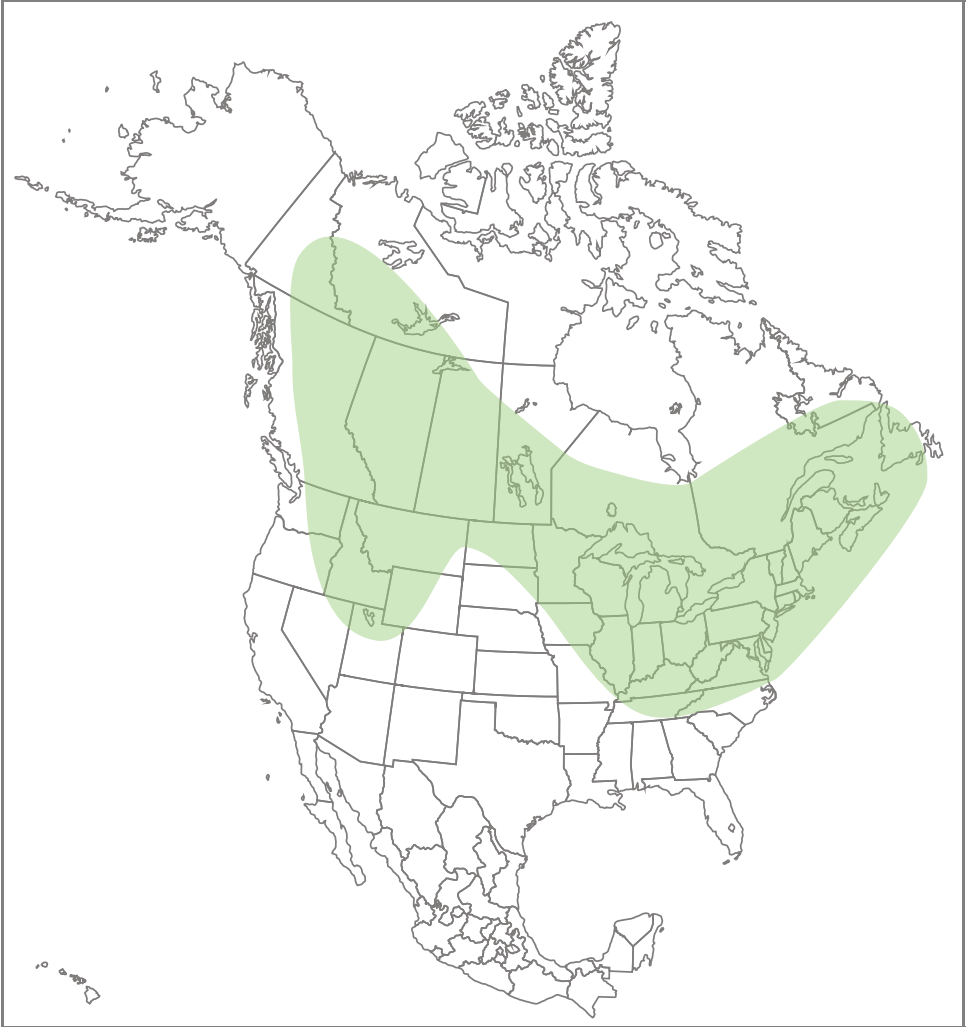
Identifying Features

Status: Rare throughout much of its range, in decline



- Black face
- Thorax variable, but always with yellow in front of wing bases
- T1 black
- T2-3 yellow
- T4 Black
- T5 almost always with yellow, especially anteriorly

Range for this species



Base map: [Wikimedia Commons](#)

Floral Associations

- Anise Hyssop
- Common Milkweed
- Fireweed
- Purple Prairie Clover
- Sweetberry Honeysuckle

Look Alike Species

- B. pensylvanicus
- B. auricomus

When to Look



About Bumble Bee Watch

Bumble Bee Watch is a community science project through the partnership of The Xerces Society, the University of Ottawa, Wildlife Preservation Canada, BeeSpotter, The Natural History Museum, London, and the Montreal Insectarium. Learn more about this project here.

Thank You, Identifiers!

Bumble Bee Watch is supported by a team of volunteer bumble bee experts that verify the identification of every sighting submitted. We couldn't do it without their help!

Stay in touch



Half-black bumble bee

Bombus vagans

select a species

▼



Photo by Eric Mader

Bumble bee illustrations: Paul Williams (identification and color patterns) and Elaine Evans (bee body design).

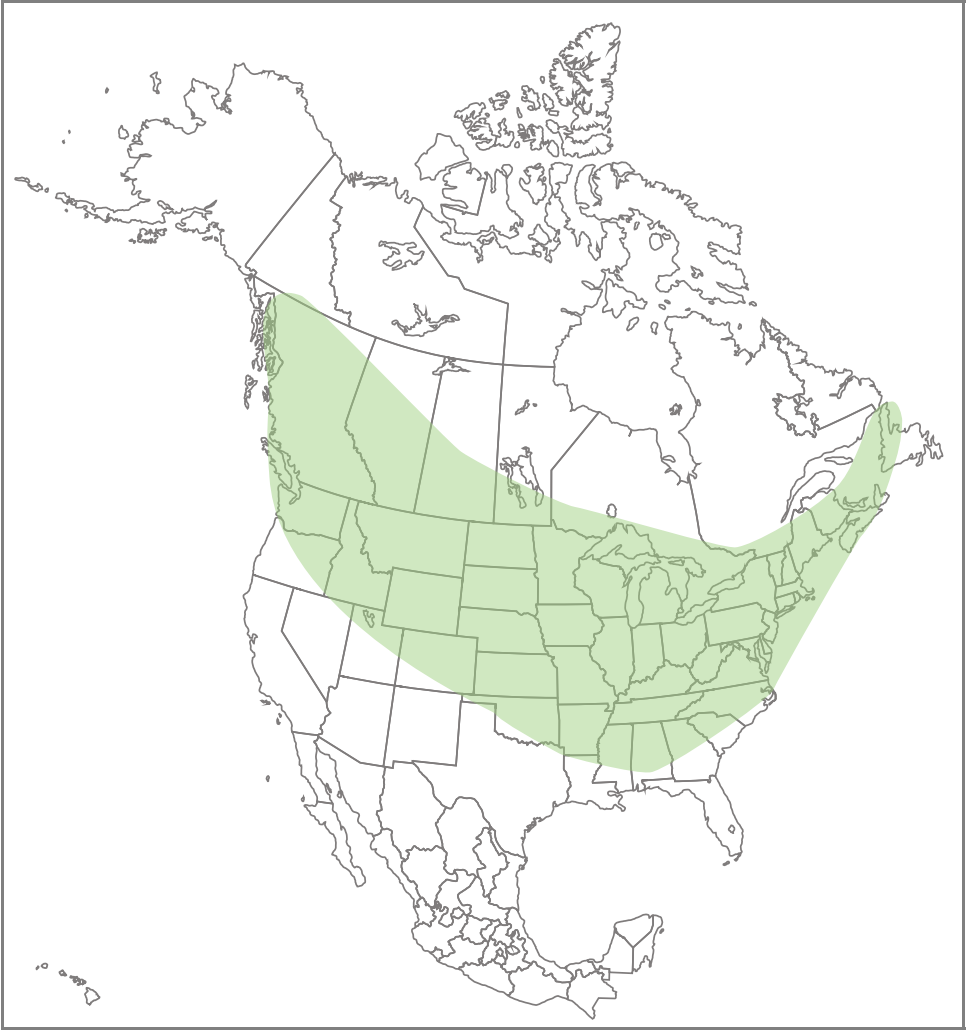
Identifying Features

Status: Common



- Face black
- Thorax mostly yellow
- T1-2 yellow
- T3-5 black
- Long face

Range for this species



Base map: [Wikimedia Commons](#)

Floral Associations

- Bristly Sarsaparilla
- White Turtlehead
- Wild Basil
- Virginia Waterleaf
- Pickerelweed

Look Alike Species

- B. flavifrons
- B. rufocinctus
- B. morrisoni
- B. perplexus
- B. sandersoni
- B. fraternus

When to Look



About Bumble Bee Watch

Bumble Bee Watch is a community science project through the partnership of The Xerces Society, the University of Ottawa, Wildlife Preservation Canada, BeeSpotter, The Natural History Museum, London, and the Montreal Insectarium. Learn more about this project [here](#).

Thank You, Identifiers!

Bumble Bee Watch is supported by a team of volunteer bumble bee experts that verify the identification of every sighting submitted. We couldn't do it without their help!

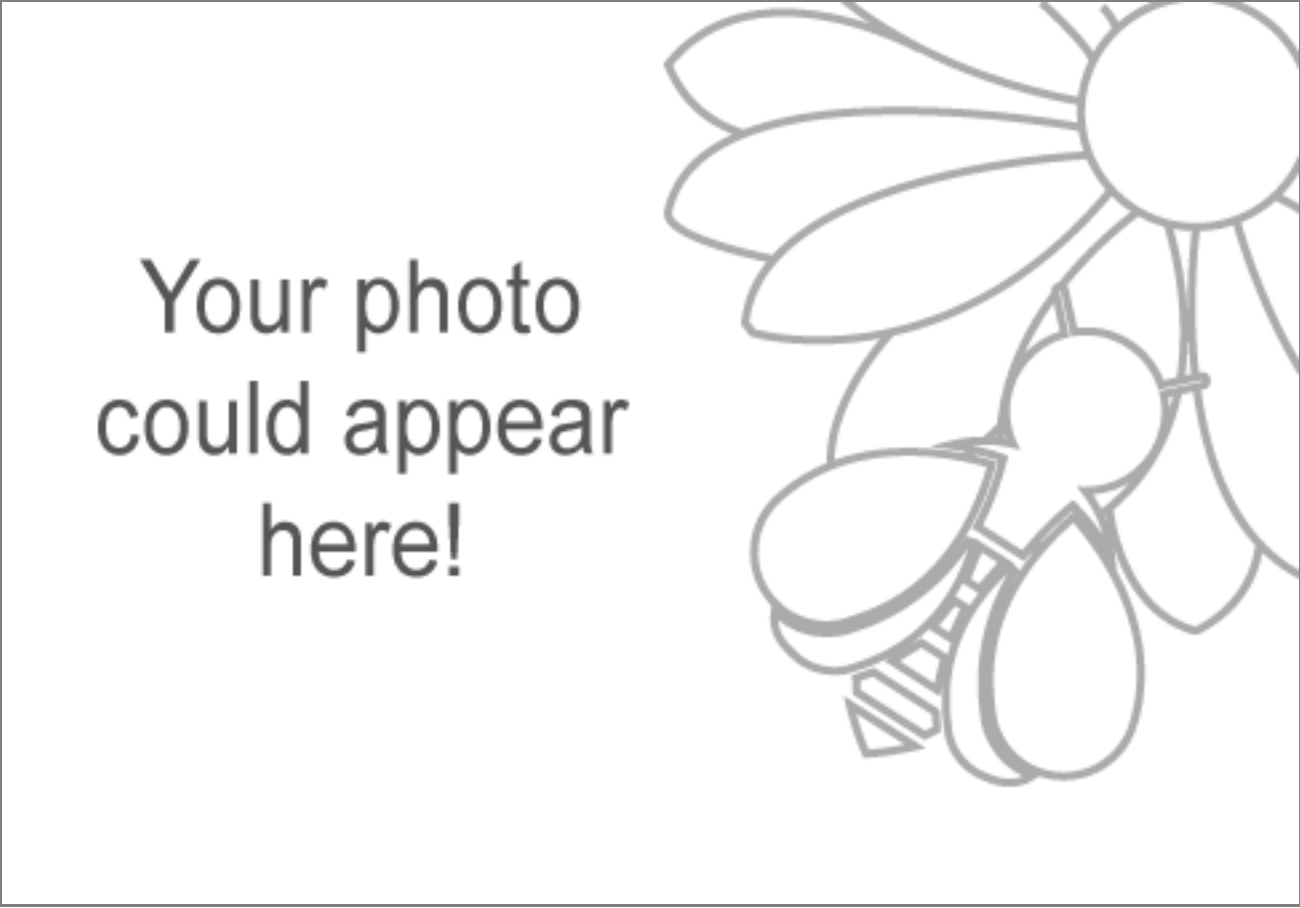
Stay in touch



select a species

▼

Photo by



Identifying Features

Status:

Bumble bee illustrations: Paul Williams (identification and color patterns) and Elaine Evans (bee body design).

Range for this species

-
Base map: [Wikimedia Commons](#)

Floral Associations

Look Alike Species

When to Look

About Bumble Bee Watch

Bumble Bee Watch is a community science project through the partnership of The Xerces Society, the University of Ottawa, Wildlife Preservation Canada, BeeSpotter, The Natural History Museum, London, and the Montreal Insectarium. Learn more about this project [here](#).

Thank You, Identifiers!

Bumble Bee Watch is supported by a team of volunteer bumble bee experts that verify the identification of every sighting submitted. We couldn't do it without their help!

Stay in touch

